

Click [HERE](#) for a copy of this PPT



Elementary and Middle School Fall Testing Meeting

Office of Assessment
Fall 2022

www.NYCDOEAAssessment.com



Agenda

Elementary and Middle School Fall Testing Meeting

Fall 2022

1. Welcome, Introductions, & Virtual Meeting Best Practices
2. Testing Resources
3. Key Information & Noteworthy Updates for SY 2022-23
 - NYSITELL, Spanish LAB, & NYSESLAT
 - Grades 3-8 NYS Assessments
 - NYSAA
 - June Regents & World Language Exams
 - Specialized High School Admissions Test (SHSAT)
 - Chinese Reading Test
 - G&T
 - NAEP
4. Q&A

Virtual Meeting Best Practices

In order to ensure that our meeting progresses in a clear and orderly fashion, and all participants can access the information provided, please adhere to the following virtual meeting best practices:

- ✓ Avoid multitasking by turning off cell phones, resisting web browsing, and staying engaged in the meeting. This will help us avoid the need for unnecessary repetition.
- ✓ Save your questions until the Q&A at the end of the presentation.
- ✓ Use the "raise hand" function to indicate that you wish to ask a question of the group during the designated Q&A period.
- ✓ Limit background noise by keeping your other devices on vibrate or mute when you speak during the Q&A.

Note: Please recognize that there may be questions or concerns raised that we are unable to address at this time. However, we will note any pressing concerns and share relevant information with you as it becomes available.

Confirm Test Coordinator Role in Galaxy

Principals designate their Test Coordinator through Role Assignment in [myGalaxy](#) at the beginning of each school year. This designation allows Test Coordinators to:

- Receive the weekly Test Coordinators' News (TC News) in their DOE email.
- Receive important communications, reminders, and training invitations directly from the Office of Assessment.
- Receive automated emails from our online scoring tools when there are issues with testing materials that are identified by scoring sites.

Note:

- *If you are **not** receiving Test Coordinators' News or are new to the role this school year, please work with your school's principal to ensure that you are appropriately designated in Galaxy.*
- *Administrators may refer to the [September 9, 2022 issue of Test Coordinators' News](#) for a current list of Test Coordinators by school and instructions for updating the information in Galaxy.*

Test Coordinator Responsibilities

Each school Principal must designate a “Test Coordinator” in Galaxy to complete the following:

- ✓ Serve as the primary point of contact for testing information.
- ✓ Review assessment memos, testing schedules, and test coordinator presentations and *disseminate relevant updates to colleagues*.
- ✓ Work with school Principal to ensure that exam orders are submitted on-time.
- ✓ Collaborate with Special Education Support to ensure that eligible students receive testing accommodations and provide feedback on the implementation of testing accommodations on student IEPs.
- ✓ Oversee the printing and scanning of student answer documents.
- ✓ Ensure that secure and non-secure exam materials are delivered and securely stored.
- ✓ Pack answer documents and tests for scoring in accordance with DOE directions.

Review Test Administration Handbook

Reminder! Review the contents of the **Test Administration Handbook** with all staff members who are involved with testing.

- Principals must complete this [online form/survey](#) by **November 18, 2022**, confirming that the handbook has been reviewed with staff who are involved with testing.
- Principals should refer to the **September 28th issue** of [Principals' Digest](#) for the links to the [Elementary/Middle](#) and [High School](#) level Test Administration Handbooks, as well as the link to the required principal survey. Visit this [Assessment InfoHub page](#) for the above materials.



NYC Department of Education
Test Administration Handbook:
Elementary and Middle Schools
2022 – 2023

Resources for Test Coordinators

For help with common assessment questions, refer to the following resources:

- [Academic Policy, Systems, Performance & Assessment Leads \(APPAs\)](#)
 - APPAs are the primary point-of-contact for assistance with testing.
- [Borough Assessment Implementation Directors \(BAIDs\)](#)
 - Test security (including exam invalidations and mis-administrations)
 - NYSED and L2RPT access escalations
 - Incomplete “INC” or missing score escalations
 - Obtaining emergency copies of NYS exams and Spanish LAB
- [Assessment Pages on InfoHub](#)
 - Links to testing memos, FAQs, TC presentations, and updates.
 - Principals’ Digest & Test Coordinators’ News
 - Timely updates, links to testing memos and informational resources.
- [NYSED Office of Assessment Website](#)
 - Links to test manuals, ordering instructions and updates.

NYC Testing Information

The official NYCDOE testing information page is on the [NYCDOE InfoHub](#).

<https://infohub.nyced.org/nyc-doe-topics/performance-assessment/performance-and-assessment-resources>



Family Website

DOE Applications and Systems

Calendar

Sign Out

Search...



Working with the DOE

Reports

In Our Schools

DOE Roles

School Year

DOE Topics

Home ▶ DOE Topics ▶ Performance & Assessment ▶ Assessment Resources

Assessment Resources

The Office of Assessment helps New York City public schools administer summative assessments and receive timely and accurate results, which schools use to make instructional decisions that will best prepare students for college and career. The Office of Assessment also supports schools in their understanding, preparation, administration, and scoring of all assessments that impact graduation and eligibility for special programs, including college.

- The City and national assessments aim to select or qualify students for programs, scholarships and post-secondary opportunities, or to provide data for national or

See Also

[Exam Calendar](#)

[Advanced Placement](#)

[ELA, Math, Science Exams](#)

The InfoHub is accessible from any computer to users with a DOE Outlook ID and password.

**NYS Identification Test of
English Language Learners
(NYSITELL)**

**Spanish Language Assessment Battery
(Spanish LAB)**

**NYS English as a Second
Language Achievement Test
(NYSESLAT)**

Identify ELLs and Former ELLs

Test Coordinators should use the **RLAT** report in ATS to identify ELLs and former ELLs at the beginning of the school year.

- Former ELLs are entitled to ELL test accommodations after attaining proficiency.
- For the 2022-23 school year ELL accommodations are available to students who met existing criterion the last **TWO** school years: 2020-2021 or 2021-2022.
- Students who tested out on the NYSITELL or LAB-R, or who were determined not to have English language acquisition needs as per the ATS **ELLO** function are not former ELLs and do not receive ELL testing accommodations.

NYSITELL Updates

For an emergency supply of NYSITELL exams, contact your [BAID](#) to schedule a pick-up from the Borough Assessment Office.

As per NYSED guidance, schools must complete the formal identification process and place ELLs, including incoming students with an Individualized Education Program (IEP), into an ELL program within the mandated 10-day window.

Note: *Students who have been outside of the NYS public school system for more than 2 years must be re-administered the ELL identification process. See the [Policy and Reference Guide for MLLs/ELLs](#)*

NYSITELL Updates, *continued*

NYSITELL Administration Dates

NYSITELL

Students who are potential ELLs, as determined by the Home Language Identification Survey (HLIS), **must be assessed within 10 days of entry into the NYC school system.**

NYSITELL answer documents must be printed using the **RLBA** function in ATS. If you are unable to print a student's NYSITELL answer document, check the following:

- Does the student have a home language identified in ATS? You will not be able to print a NYSITELL answer document if the home language is "NO" (English). Review the student's home language using the **SBIO**, **BIOD** screens or the **RESI**, **RPOB** reports in ATS.

Reminder: Students must be tested within 10 days of enrollment

Tip: After administering and scanning the NYSITELL assessment, the **RLCB** report in ATS must be run to ensure that the scan was successfully captured. Do not rely only on the DFS page that prints from your scanner immediately following the scanning.

Avoid ELLO Entry Errors

The ELL Options Update (**ELLO**) function in ATS should only be used for students:

- > Whose home language is other than English, and
- > Who have been determined to not have English language acquisition needs.

These students therefore are NOT ELLs and do not take the NYSITELL.

PROFILE [REDACTED] New York City Public Schools 09-10
 ELLO0050 Ell Options (ELLO) 0

==> [REDACTED]

STUDENT NAME LAST, FIRST	STUDENT ID	LEP FLG	HM LN	NYS <2Y	OPT
[REDACTED]	[REDACTED]	E	SP		—
[REDACTED]	[REDACTED]				—
[REDACTED]	[REDACTED]				—
[REDACTED]	[REDACTED]				—
[REDACTED]	[REDACTED]	E	SP		—
[REDACTED]	[REDACTED]	Y	SP	Y	—
[REDACTED]	[REDACTED]	E	SP		—
[REDACTED]	[REDACTED]				—

Make changes as required, F2 to save changes.

F1/Help F2/Save F3/Quit-return F4/Lookup F5/
 F7/ F8/Forward F9/Refresh F10/ F11/

Note: By entering a code of “A,” “B,” “C,” or “D” and hitting F2 to save, you are indicating that the student is NOT an ELL.

Refer to **pages 38-39** under the section “ELL Options (ELLO) Screen in ATS” of the [Policy and Reference Guide for MLLs/ELLs](#) for a description of the codes and additional info on ELLO policy.

An entry on the ELLO screen indicates that the school’s principal, and Language Proficiency Team (LPT) determined within 10 days of the student’s admission into a NYCDOE school that the student does not have language acquisition needs. **Do NOT** make an entry on the ELLO screen if the student is thought to be an ELL, and you plan to administer the NYSITELL to the student.

ELL Exemptions for Grades 3-8 NYS ELA

Schools are permitted to exempt ELL students who, on **April 1, 2023**, are attending school in the US for the first time for less than a year. **Before determining that an ELL student is exempt from the ELA exam, review the following guidance.**

- ELL students may be eligible for one, and only one exemption from the administration of the NYS Grades 3-8 ELA exams.
- For the purposes of counting “one year,” one year does not have to be consecutive months and one day of enrollment in a US School System (USSS), as long as the student was not exempt from a previous ELA exam.
 - If the student is active in September of 2022, July and August of 2022 are counted as months of enrollment. If a student is discharged to a non-US school, his/her enrollment does not start over, but instead picks up where it stopped (the clock begins). Students re-classified as ELLs upon re-entry do not have the “clock” restarted.
 - **Example:** An ELL student who was admitted to an NYS school on April 30, 2022 would NOT be exempt from the 2023 ELA exam as they qualified for the exemption in 2022 and it is past 12 months of enrollment which includes July and August, but a student who was admitted on May 1, 2022 may qualify for the exemption.
- Months enrolled in a US School System should be captured on the **UYRE** function. ELA Exempt status appears in the **RETT** report in ATS.

ELL students are NOT exempt from content area exams (e.g., math, science or Regents). Additional guidance can be found on **page 145** under the section "**Exemptions from the NYS English Language Arts Exam: Grades 3 to 8**" of the [Policy and Reference Guide for MLLs/ELLs](#).

Spanish LAB Administration

Spanish LAB Administration Dates

Spanish LAB

The Spanish LAB must be administered to students who are determined to be ELLs through the NYSITELL and identify Spanish (SP) as their home language on the Home Language Identification Survey (HLIS) and in ATS.

Spanish LAB answer documents must be printed using the **RSLA** function in ATS. If you are unable to print a student's Spanish LAB answer document check the following:

- Does the student have a home language of "SP" identified in **SBIO** or **BIOD** in ATS? You will not be able to print a Spanish LAB answer document if the home language is not Spanish.
- Has the student been enrolled in a NYCDOE public school for more than 30 days?

Note: *Students must be tested within 10 days of enrollment but answer documents may be printed for up to 30 days after the student is enrolled.*

Tip: *You will not be able to successfully scan the Spanish LAB answer document into ATS until one day after you have scanned the NYSITELL answer document. Wait one day to scan the answer document, then immediately run the **RSLR** report in ATS to confirm that the test was successfully scanned.*

NYSESLAT Updates

NYSESLAT answer documents will continue to be printed from ATS and scanned in schools in SY 2022-23.

NYSESLAT Administration Dates	
NYSESLAT (Speaking)	April 17 - May 26
NYSESLAT (Reading, Writing, Listening)	May 15 - 26

Tip! *Identify common reasons why NYSESLAT answer documents cannot be printed using the **LTPR** function in ATS:*

NYSESLAT answer documents can only be printed for students with a LEP flag of “Y” or “E” in **SBIO** or **BIND** in ATS. If the student is believed to be eligible for the NYSESLAT, but the LEP flag of “Y” or “E” is not in place, check the following:

- Does the student have a home language listed in **SBIO**?
- Did the student test out of ELL services during the previous school year?
- Was an entry made on the **ELLO** function in ATS during the admission process, exempting the student from ELL services?

ATS Reminder: *After administering and scanning the NYSESLAT assessment in May and scanning it into ATS, always run the **LTDS** report to ensure that all pages were successfully scanned.*

NYS Grades 3-8 Assessments

NYS Grades 3-8 ELA, Math, & Science Assessment Updates

New since SY 2020-21!

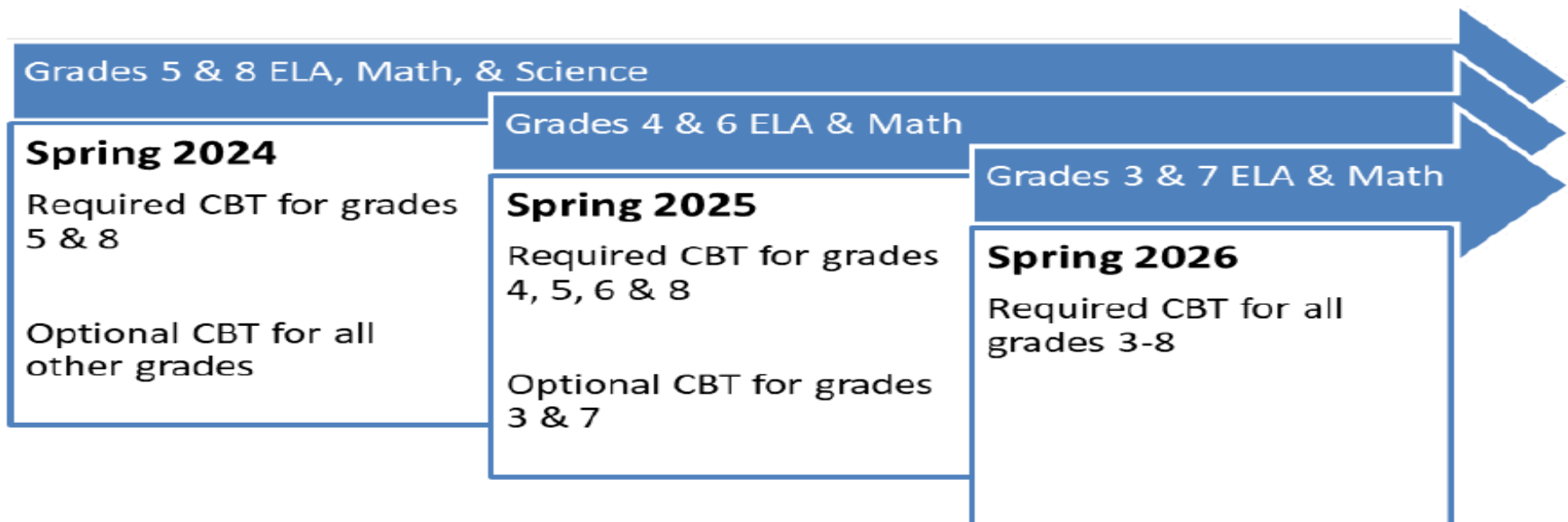
New Alternate Languages:

- The Grades 3-8 Mathematics tests are now available in three additional languages: **Arabic, Bengali, and Chinese (Simplified)**.
- Chinese (Traditional), Haitian Creole, Korean, Russian, and Spanish editions of the Mathematics tests will continue to be available in SY 2022-23.
- Above eight alternate language editions are also available for the Grade 8 Science exam.

Computer-Based Testing (CBT) Grades 3-8 ELA, Math, & Science

NYSED provided the timeline for the transition to computer-based testing in this [memo](#) from June 16, 2022. **Starting in 2024, schools will be required to participate in operational CBT for grades 5 & 8 ONLY.**

- Starting in 2025, schools will be required to participate in operational CBT for grades 4-8
- Starting 2026, all schools will be required to participate in operational CBT administration for ALL grades.



CBT Grades 3-8 ELA, Math, & Science, *continued*

In preparation NYSED's mandated CBT transition, please note the following updates related to CBT participation in the 2022-23 school year.

2022-23 CBT Field Tests:

- To prepare for this transition, schools that are selected by NYSED to participate in Stand-Alone Field Testing (SAFT) in Spring 2023 will administer the field tests in NYSED's CBT platform: Nextera.
- When ordering exams, ensure you select "Computer" under field testing.

2022-23 CBT Operational Tests for Grades 3-8 ELA and Math:

- Schools continue to have the option of participating in operational CBT in any grade/content area prior to the mandated transition.

Note: On **September 27, 2022**, NYSED's grades 3-8 test vendor, **NWEA**, activated superintendents' and principals' **Nextera** Admin accounts for all schools.

- *If you are not administering computer-based operational tests, you may disregard the accompanying email and memo from NYSED.*
- *If you are administering computer-based operational tests, please follow the guidance in both the email and memo.*

NYS Grades 3-8 ELA, Math, & Science Assessment Updates

Grades 3-8 ELA, Math, & Science Administration Dates

Exam	NYS	NYC
English Language Arts	April 19- April 21 (Paper Based) • Make-Up Dates: April 24-April 28 April 19- April 26 (Computer Based) • Make-Up Dates: April 24-April 28	April 19-April 20 (Paper Based) • Make-Up Dates: April 24- April 28 April 19-April 26 (Computer Based) • Make-Up Dates: April 24- April 28
Mathematics	May 2- May 4 (Paper Based) • Make-Up Dates: May 5-May 11 May 2- May 9 (Computer Based) • Make-Up Dates: May 5-May 11	May 2- May 3 (Paper Based) • Make-Up Dates: May 4- May 11 May 2- May 9 (Computer Based) • Make-Up Dates: May 4- May 11
Science Grade 8	May 23 - June 2 (Performance Test) • Make-Up Dates: May 23-June 2 June 5 (Written Test) • Make-Up Dates: June 6-9	May 23 - June 2 (Performance Test) • Make-Up Dates: May 23-June 2 June 5 (Written Test) • Make-Up Dates: June 6-7* <i>*6/8: Chancellor's Conference Day</i> <i>*6/9: Clerical Day: K-5, K-6, 6-8, K-12 schools, & D75 programs</i>

NOTE: No Grade 4 science exam will be administered in 2022-23. The Grade 5 Science exam commences in 2023-24.

NYS Grades 3-8 ELA, Math, & Science Assessment Updates

Action Items for SY 2022-23 Grades 3-8 Testing:

- Continue to order Grades 3-8 ELA, Math & Science exams on the [NYSED Business Portal](#)
- Review the Grades 3-8 ELA/Math Scoring Memo (*October/November*)
- Attend Spring Grades 3-8 Test Coordinator Meeting (*March*)
- Print answer documents & prepare non-secure test materials (*March/April/May*)

Grades 3-8 ELA & Math Ordering	Grade 8 Science Ordering
Opened: October 4th Deadline: December 9th	Opened: October 4th Deadline: December 9th

Note: The Grade 4 science exam will be NOT administered in 2022-23. The Grade 5 Science exam commences in 2023-24.

Review Testing Accommodations

Since 2017, NYSED has allowed the Grades 3-8 ELA assessment to be read aloud to eligible students. In preparation for the 2023 ELA assessment:

- Review the [Read Aloud Test Accommodations for ELA FAQs](#).
- Read NYC DOE [Testing Accommodations](#)
- Read NYSED [Testing Accommodations for Students with Disabilities, September 2019](#)
- Identify students whose IEPs or 504 Plans allow “Tests Read” *including* tests of reading comprehension.

Note: “Questions Read” is not a recognized accommodation on NYS exams, and student IEPs and 504 Plans should have been updated accordingly to reflect that the entire test will be read if appropriate.

Test Coordinators should collaborate with their Special Education Support to review student test accommodations at the beginning of the school year:

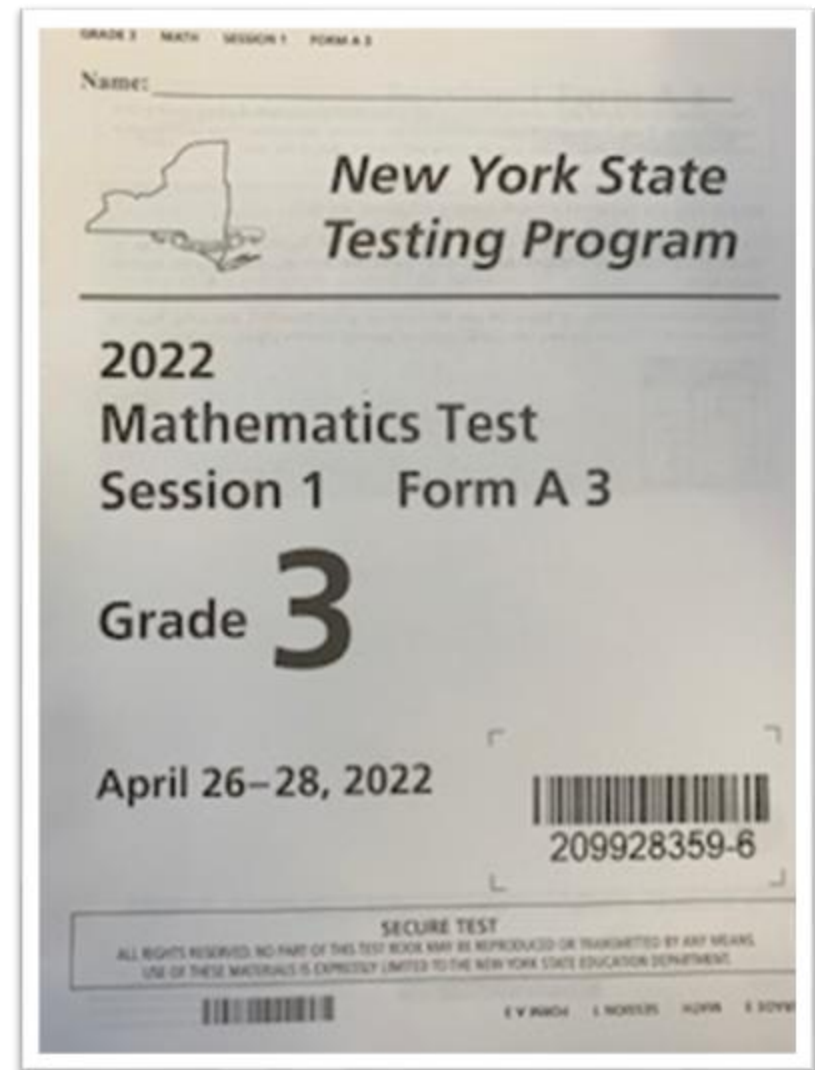
- Students who are eligible for test accommodations should receive them as part of their regular classroom instruction, and not only on State exams.
- CSE should consider the appropriateness of accommodations each year and may include input from the Test Coordinator.
- Accommodations listed on student IEPs should be reviewed to ensure that they are permissible on State exams.

Identify Eligible Students & Order Exams

Identify all students who are eligible to participate in the NYS Grades 3-8 Exam, and determine if you will need to order any of the following exam materials:

- > “Tests Read” copies for students who are eligible to receive a read aloud of the entire ELA and/or Math exam.
- > Alternate language Math and Science test booklets for ELL students.
- > Large print test booklets.
- > Braille test booklets.

Note: *ELA and Math multiple choice test booklets are normally spiraled within a pack. By ordering “Tests Read” copies you can ensure that you receive a pack of exams with the same form number, as opposed to a mix of different forms.*



Access the NYSED Ordering Portal

Principals must use NYSED's Business Application Portal to order NYS Exams:

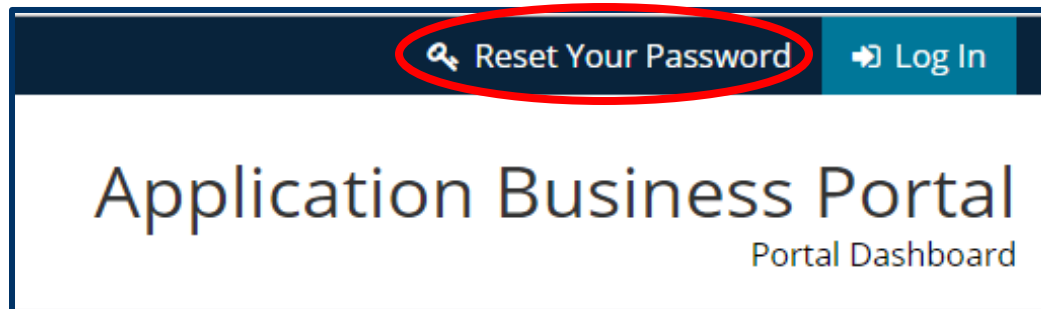
Step 1: Visit <http://portal.nysed.gov/>

Step 2: Click on the “Log In” button and enter the username.

- > If your name is John Smith, your username is probably **john.smith**

Step 3: Enter your password and hit “Sign In”

- > Principals* can reset their own passwords using the “Reset Your Password” link at the top right corner of the portal home page.



Note: The NYSED Ordering Portal is also used to select computer-based Grades 3-8 Field Testing in the Spring.

***New principals should contact their BAID for assistance with their accounts. Please don't wait until the last minute!**

Order Test Materials

Test Coordinators should work with their APO or School Business Manager to obtain the following testing supplies (if needed):

- > **Rulers** – students in Grades 3-8 must have one for the entire math test.
- > **Protractors** – students in Grades 4-8 must have one for the entire math test
- > **Calculators** – Graphing Calculators are not permitted for Grades 3-8
 - Grades 3-5: students may not use calculators
 - Grade 6: students must have the use of a four-function calculator with a square root key or scientific calculator for Session 2
 - Grades 7-8: students must have the use of a scientific calculator
- > **Pencils** - Number 2 pencils are required for the exam.
- > **Bilingual Glossaries** - English Language Learners (ELL) and former ELL students may use bilingual glossaries for all exams except NYSESLAT, and the World Language Exams (formerly LOTE).
- > **Science Supply Kits** – required for testing the performance component of NYS Grade 8 science exam. Also needed are:
 - Triple-beam balances for Grade 8 science exam
 - Microscopes in working order for the Grade 8 science exam

Additional Resources:

- Suppliers for Performance Test Kits: [Intermediate-Level Science Test Manuals \(Appendix VIII\)](#)
- Calculator Use: [NYSED Math Toolkit Calculator Use Chart](#)

Get Ready to Print!

Your MFP (Multi-Function Printer) probably needs care.

- Clean scanner glass (see these [instructions](#)) and make sure it doesn't need service before answer document printing begins.
- Order genuine LEXMARK toner to ensure quality printing.
- Print and scan a test page using **EMTP** to check that all is working properly.
- Currently-supported models of Lexmark ATS printers that print AND scan ATS documents, available for purchase:
 - **MX722 (recommended)**
 - **MX522 (lower volume scanner)**
 - **CX735 (new model)**



New York State Alternate Assessment (NYSAA)

New York State Alternate Assessment (NYSAA)

The NYSAA is part of the New York State testing program that measures the attainment of the State's learning standards in the areas of English language arts (ELA), mathematics, and science for students with the most severe cognitive disabilities. Students are assessed annually in ELA and mathematics in grades 3-8 and one time at the secondary level prior to exiting school. In science, students are assessed in **grade 8 in SY 22-23** and one time at the secondary level prior to exiting school. NYSAA eligible students are assessed using the Dynamic Learning Maps (DLM) alternate assessment system.

NYSAA Administration Dates

March 13 - June 9, 2023

The DLM alternate assessment system is a computer-delivered adaptive assessment that measures student achievement of the ELA, mathematics, and science standards at a reduced level of depth, breadth, and complexity. This computerized assessment allows for greater student accessibility and provides useful information to help inform instruction.

NYSAA Updates

Important! Please note the updated SY 22-23 NYSAA Age Range Chart linked [HERE](#).

Students with disabilities participating in NYSAA are assessed according to the chronological age aligned with grade levels:

- NYSAA-eligible students who do not meet the age criteria in the chart above for the secondary level and will be exiting school before they reach their eighteenth birthday must take the secondary-level NYSAA before they leave school (i.e., when they are 17 years old).
- All NYSAA-eligible students noted in the secondary-level age range are assigned to the Grade 9 cohort in Educator Portal, regardless of the actual grade that the student is enrolled in at school. The grade must be 9 in the Educator Portal system.

Next Steps:

1. Identify Students based on their IEP and Grade Level based on NYSAA Age Range Chart.
2. Identify Staff participating in NYSAA Administration.
3. Ensure that one or more “NYSAA Test Coordinators” from your school attend a virtual, computer-based NYSAA training facilitated by a BAID in December.
4. Ensure that all Staff participating in NYSAA have an active KITE Portal Account.
5. Ensure that teachers and administrators who will administer the NYSAA to students log in to their DLM accounts and complete online training before the test administration begins.
6. Begin testing eligible students in March, and DO NOT wait until the last minute to get started.

NYSAA Resources

- **Building Test Coordinator's Checklist** (Expected Fall 2022)
- **The DLM Data Management Training PowerPoint** (Expected Fall 2022)
- **DLM Website:** <https://dynamiclearningmaps.org/newyork>
- **KITE Educator Portal:** <https://educator.kiteaai.org/AART/login.htm>
- **NYSED NYSAA Page:** <http://www.nysed.gov/state-assessment/eligibility-and-participation>
- **NYCDOE NYSAA InfoHub:** <https://infohub.nyced.org/nyc-doe-topics/performance-assessment/assessment-resources/new-york-state-alternative-assessment>
- **NYSAA Parent Resources:** <http://www.nysed.gov/state-assessment/nysaa-parent-resources>

June Regents & World Language Exams (Checkpoints A & B)

The University of the State of New York
THE STATE EDUCATION DEPARTMENT
Office of State Assessment
Albany, New York 12234

EXAMINATION SCHEDULE: JUNE 2023

Students must verify with their schools the exact times that they are to report for their State examinations.

June 1 THURSDAY	June 14 WEDNESDAY	June 15 THURSDAY	June 16 FRIDAY	June 19 MONDAY	June 20 TUESDAY	June 21 WEDNESDAY	June 22 THURSDAY	June 23 FRIDAY
9:15 a.m.	9:15 a.m.	9:15 a.m.	9:15 a.m.	Juneteenth Holiday Observed	9:15 a.m.	9:15 a.m.	9:15 a.m.	RATING DAY
U.S. History & Government (Framework)*	English Language Arts	Global History & Geography II	Physical Setting/ Earth Science		Geometry	Algebra II	Physical Setting/ Physics	
					* World Language Assessment suggested date/time: Locally developed Checkpoint A Exam			
	1:15 p.m.	1:15 p.m.	1:15 p.m.		1:15 p.m.	<u>Uniform Admission Deadlines</u> Morning Examinations: 10:00 a.m. Afternoon Examinations: 2:00 p.m.		
	Living Environment	Algebra I	Physical Setting/ Chemistry		* World Language Assessment suggested date/time: Locally developed Checkpoint B Exam			

* The Conversion Chart for this exam will be available no later than June 23, 2023

Note: The World Language Exams (formerly LOTE), will be administered on Tuesday, June 20, 2023, as per above NYSED exam calendar

New in SY 2022-23! Regents Exams will be Scored Locally

Effective as of the January 2023 Regents exams will be scored in a local scoring model, and NYCDOE will no longer centralize scoring. All applicable school-based staff will be available to administer exams and participate in local scoring, with the exception of Chemistry, Physics, U.S. History, and certain World Language Checkpoint B exams in June, which will continue to be scored centrally.

- In the coming months, the Office of Assessment will provide schools with additional information and professional development to ensure schools have the information and tools to organize local scoring.
- Middle schools that administer Regents exams must adhere to the scoring requirements outlined on pages 23-25 of the [2019 Edition, School Administrator's Manual, Regents Examinations](#), published by NYSED.

Note: *This change does not impact the scoring of NYS grades 3-8 ELA and Math. Those exams will continue to be scored centrally.*

World Language Exams

Detailed information about the Comprehensive World Language Exam (formerly LOTE) administration process will be shared in the Spring.

SLP & WL Exam Administration Date

Second Language Proficiency Exam (Checkpoint A)	June 20 (AM)
Comprehensive World Language Exam (Checkpoint B)	June 20 (PM)

For the Comprehensive World Language Exam eligibility and administration information, refer to these InfoHub pages:

- [Second Language Proficiency](#)
- [World Language Exams](#)

The screenshot shows the NYC Department of Education InfoHub website. The header includes the NYC Department of Education logo, navigation links for Family Website, DOE Applications and Systems, and Calendar, and a Sign Out button. A search bar is present. The main navigation menu includes Working with the DOE, Reports, In Our Schools, DOE Roles, School Year, and DOE Topics. The breadcrumb trail reads: Home > DOE Topics > Performance & Assessment > Assessment Resources > Languages Other Than English. The page title is "World Language Exams". The main heading is "Background and General Information". The text states: "The Comprehensive World Language Exams (formerly LOTE) is aligned with the Checkpoint B Learning Standards for World Languages. Students can meet the language assessment requirement for a Regents diploma with advanced distinction by passing the NYC Comprehensive World Language Exam. As in the previous school years, students may also use certain Comprehensive World Language exams as +1 (Multiple Pathways) options." On the right, under "See Also", there are three links: "Advanced Placement", "Gifted and Talented", and "ELA, Math, Science Exams".

Second Language Proficiency (SLP) & Its Digital Administration

The SLP exam is an assessment of Checkpoint A: the first course of study in a World Language. The SLP is available in **Chinese, French, Italian, Latin, and Spanish**.

Starting SY 2022-23:

- Middle schools may apply to administer the 2023 **Spanish** Second Language Proficiency (SLP) exam digitally.
- Principals of schools interested in participating in this operational digital exam in June should review this [memo & FAQ](#) and complete this [survey](#) no later than **October 28**.
- Two optional information sessions:
 - **October 26** at 11:00 AM or 3:00 PM
 - Register [HERE](#) to attend.

Note: Please continue to check the [SLP InfoHub](#) page for updates.

Specialized High School Admissions Test (SHSAT)

Specialized High School Admissions Test (SHSAT)

The SHSAT is administered in the fall for Grade 8 and first-time Grade 9 students who are New York City residents and who wish to attend one of the eight testing Specialized High Schools. **In school year 2022-23 the SHSAT will again be administered at students' own middle schools for all grade 8 students in Districts 1-32, 75, and 79 on November 17.**

Date	Event
October 6 – November 4	Submit a Request for Testing (RFT)
November 4	Test Registration Closes
November 1- 4	SHSAT School Day Test Coordinator Trainings
November 7	Testing Roster available in MySchools
October 31 – November 17	Schedule Students in STARS, Print Student Test Logs from ATS
Week of November 7	SHSAT Materials Delivered to Schools
November 17	SHSAT School Day Test Administration
November 18-22	Answer Sheets Picked up by Radiant
November 28 – December 2	Test Booklets and Non-Secure Materials Picked Up by Deluxe

Chinese Reading Test (CRT)

Chinese Reading Test Updates

End-of-year Administration:

Chinese Reading Test Administration Date	
Chinese Reading Test (CRT)	TBD

The **Chinese Reading Test** may continue to be administered in SY 2022-23.

Note: For questions about the HLA Spanish Performance Assessment, please email: periodicassessment@schools.nyc.gov.

Gifted & Talented (G&T)

For information on the Gifted & Talented for 2022-2023,
please visit the [NYCDOE G&T webpage](#).

National Assessment of Educational Progress (NAEP)

Nine schools were selected for NAEP testing, which begins in late October. Schools were notified directly in September.

Main Menus & Document Status Reports in ATS

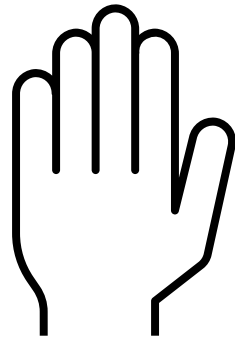
Remember to check these reports
immediately after scanning EVERY assessment:

Exam	Main Menu	Document Status Report
<u>NYSITELL</u>	ITEL	RLCB
<u>Spanish LAB</u>	SLAB	RSLR
<u>ELA/Math</u>	EM38	EMDS
<u>NYS Science</u>	SC48	SCDS
<u>Regents</u>	REGT	REDS
<u>NYSESLAT</u>	NLAT	LTDS

Borough Assessment Implementation Directors (BAIDs)

Borough	BAID	Contact
<u>Manhattan Districts</u> 1, 2, 3, 4, 5, & 6	Jonathan Ortiz	JOrtiz23@schools.nyc.gov
<u>Bronx Districts</u> 7, 8, 9, 10, 11, & 12	Yuk Fung Lam	YLam2@schools.nyc.gov
<u>Brooklyn Districts</u> 13, 14, 15, 16, 19, 23, & 32	Laura M. Dalla Betta	LDallaBetta@schools.nyc.gov
<u>Queens Districts</u> 24, 25, 26, 27, 28, 29, & 30	Barbara Marcisak	BMarcis@schools.nyc.gov
<u>Staten Island / Brooklyn Districts</u> 17, 18, 20, 21, 22, & 31	Edward Lam	ELam2@schools.nyc.gov

State Education Info Line: 518-474-8220
State Education Fax Line: 518-474-2021



Q&A